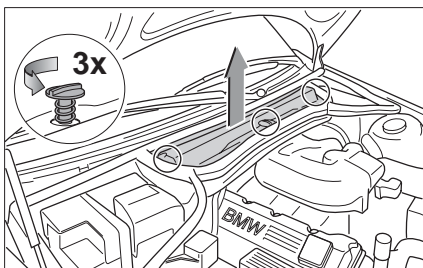
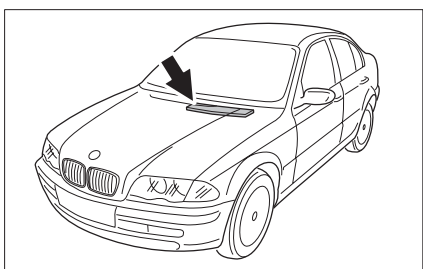
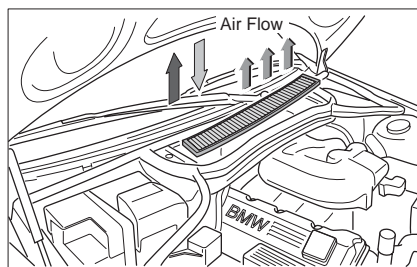
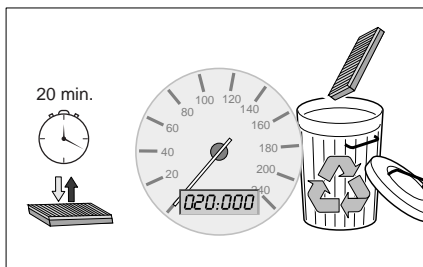


- D** Innenraumfilter
Montageanleitung
- NL** Interieurfilter
Montagehandleiding
- GB** Cabin filter
Installation instructions
- E** Filtro ventilacion para interior
Instrucciones de montaje
- F** Filtre d'habitacle
Notice de montage
- P** Filtro de purificação do habitáculo
Instruções de montagem
- I** Filtro abitacolo
Istruzioni di montaggio
- S** Kupéfilter
Installationsanvisning

BOSCH





Service

+49 (0) 180-500 4745

gebührenpflichtig/subject to charges/payant



Robert Bosch GmbH

Postfach 41 09 60, D-76225 Karlsruhe

www.bosch-automotive.com



Gedruckt auf Recycling-Papier Printed in Germany
Printed on recycled paper Imprimé en Allemagne